

Lower Middle Tennessee Cattle Association

VIDEO BOARD SALE

Friday, April 5, 2024

9 a.m. CST

UPI — Columbia

1231 Industrial Park Rd., Columbia, TN

View the catalog
at uproducers.com



Bid online
at lmauctions.com



Sale management provided by:

United
 **Producers, Inc.**



**WELCOME TO THE
LOWER MIDDLE TENNESSEE CATTLE ASSOCIATION
*VIDEO BOARD SALE***

April 5, 2024

THIS OFFERING INCLUDES:

572 STEERS

98 HEIFERS

670 TOTAL HEAD OFFERED

***** AUCTIONEER ***:**

Jacob Massey

Petersburg, TN

Sale starts at **9 AM CST** at the **Columbia Livestock Center:**
1231 Industrial Park Road Columbia, TN

Please contact the office at (931) 223-8323 prior to the sale to reserve your line.

SALE BROADCAST LIVE AT www.lmauctions.com

For more information contact:

Dennis Wentzel
President, LMTCA

Richard Brown
UPI
(931) 239-9785 (*cell*)

Frank Poling
UPI
(931) 212-9962 (*cell*)

LOWER MIDDLE TENNESSEE CATTLE ASSOCIATION
VIDEO BOARD SALE
Management: United Producers, Inc.

TERMS AND CONDITIONS

GENERAL

1. By Participating in the auction, buyers and sellers expressly agree to adhere to the Terms and Conditions set forth herein and to the provisions set forth in the Video Cattle Marketing Contract.
2. Terms and Conditions of the sale are printed in sale catalog; however, announcements from the auction block take precedence over printed material.
3. All buyers and sellers who are not present at auction but who participate in the auction by any means shall be deemed to have authorized United Producers, Inc. to sign the Video Cattle Marketing Contract on their behalf.
4. Cattle are graded and identified as to breed, muscle score, frame size and flesh.
5. Cattle are available for viewing the week of the sale. Buyers wanting to see any lots should call United Producers, Inc. to schedule.

PRICE SLIDE

Based on advice from USDA Market News Service and/or U.T. Extension, the recommended price slide will be listed on each lot sold. Every effort has been made to give our best estimate on all weights.

Unless otherwise stated in individual lot sale conditions, Cattle 50 pounds or less over base weight will slide heavy side only at listed price slide.

Cattle will have a 50 lbs. weight stop unless otherwise noted.

WEIGHTS AND WEIGHING INFO

1. All weights given are best estimates as determined by United Producers, Inc. personnel, and consignor. Every effort has been made to be accurate; however, **no guarantee is offered on the estimated weight or range.**
2. **A 36 HOUR NOTICE IS REQUIRED FROM BUYER TO UNITED PRODUCERS, INC. TO LOAD CATTLE.** Cattle will be delivered per weighing conditions described in the catalog for each lot. Sellers will deliver all cattle consigned unless prevented from doing so by reasons beyond their control.
3. Unless otherwise stated or negotiated, Cattle must be picked up within 10 days of the sale date. Sundays are not available for delivery. All scheduled weighings are to be arranged through United Producers, Inc. with proper notice.
4. Cattle will be weighed and loaded by United Producers, Inc. employees or representatives. United Producers, Inc. will cut out any blemished or unmerchantable cattle with agreement of buyer and seller. Cattle will be weighed when all consigned cattle are at the scales or per catalog write-up if different.

OPEN HEIFERS

Unless otherwise provided in writing, heifers sold **are not** guaranteed open.

PREGNANCY CHECKING OF HEIFERS

Sellers may, at their discretion, allow a buyer to have the heifers they are purchasing pregnancy checked. If heifers are pregnancy checked, they must be checked at the Seller's Farm or at one of UPI's shipment facilities. Otherwise, buyer accepts heifers "as is".

NO SALES

Seller reserves the right to reject bids. In the event of a "NO SALE," the last bidder will be paid \$1.00 (one dollar) per head by the marketing agency, and the seller will be charged a fee of \$3.00 (three dollars) per head.

BINDER FEE

United Producers, Inc. retains the authority to charge the buyer a binder fee of up to \$50.00 per head for each lot bought and to apply toward purchase of said lot, due upon request by United Producers, Inc. Buyers present at sale may pay this fee at the close of sale. Others may pay this fee within 3 days of the applicable sale date. A failure to pay the required binder fee will be considered a default.

SETTLEMENT

All sales are due and payable immediately upon weighing of livestock and receipt of invoice. It is further expressly intended, understood, and agreed that this is a cash transaction.

TITLE AND LIABILITY

1. Title and ownership of the cattle do not transfer to buyer, notwithstanding delivery or possession, until the purchase price is paid in full and all funds are collected.
2. Liability for loss of the cattle transfers to buyer at the time cattle are weighed or loaded onto truck whichever occurs first.

WARRANTIES

The parties expressly agree that there are no warranties express or implied on any cattle listed or sold. All cattle are sold "**as is.**"

DEFAULT

In case of failure to perform any term or condition in the agreement by either buyer or seller, the defaulting party shall be liable for actual and incidental damages as permitted by law, plus court costs and reasonable attorney fees, as well as any other available relief. Default in payment shall include: 1.) Failure to receive full and final payment; 2.) Default of instrument given in payment; 3.) Death, bankruptcy or insolvency of buyer. Upon default, United Producers, Inc., with or without notice, may impose all rights afforded by law. The laws of the State of Tennessee shall govern.

FLESH SCORES

1	Thin -	4	Medium -	7	Fleshy -
2	Thin	5	Medium	8	Fleshy
3	Thin +	6	Medium +	9	Fleshy +

COMMISSION & BEEF CHECKOFF

Seller's Commission and Marketing fees are established by Lower Middle Tennessee Cattle Association in conjunction with United Producers, Inc. and will be charged on each lot. Additionally, \$1.00 per head will be deducted from seller for National Beef Checkoff and \$.50 per head for Tennessee State Beef Checkoff. (TN Beef Checkoff is a volunteer checkoff. All markets are required by law to deduct. A refund option is available through the Tennessee Department of Agriculture.)

INSURANCE

Livestock Insurance on all sold livestock will be deducted from seller's proceeds at an established rate by the carrier to cover accidental death or injury at time of **weigh up** and **load out**.

ANIMAL DISEASE TRACEABILITY LAWS

Beginning January 1, 2015, all livestock moved out of the state of origin must be accompanied by a Certificate of Health Inspection from an accredited veterinarian. It shall be the **Buyer's responsibility** to furnish necessary information at least 3 days prior to weigh up in order to obtain a certificate from the Seller. It shall then be the **Seller's responsibility** to provide the certificate or the information necessary to secure a certificate from the veterinarian.

UPI VIDEO SALE REPRESENTATIVES

Please contact one of our representatives for assistance.

- GENERAL OFFICE 931-223-8323
 - FRANK POLING 931-212-9962
 - RICHARD BROWN 931-239-9785
 - JIMMY JENNINGS 931-993-6817
 - JOSH WOODWARD 931-703-9090
 - BRIAN LOVELL 502-381-7984
 - JONATHAN TREW 423-584-9976
-

Sale Management provided by:



April 5, 2024

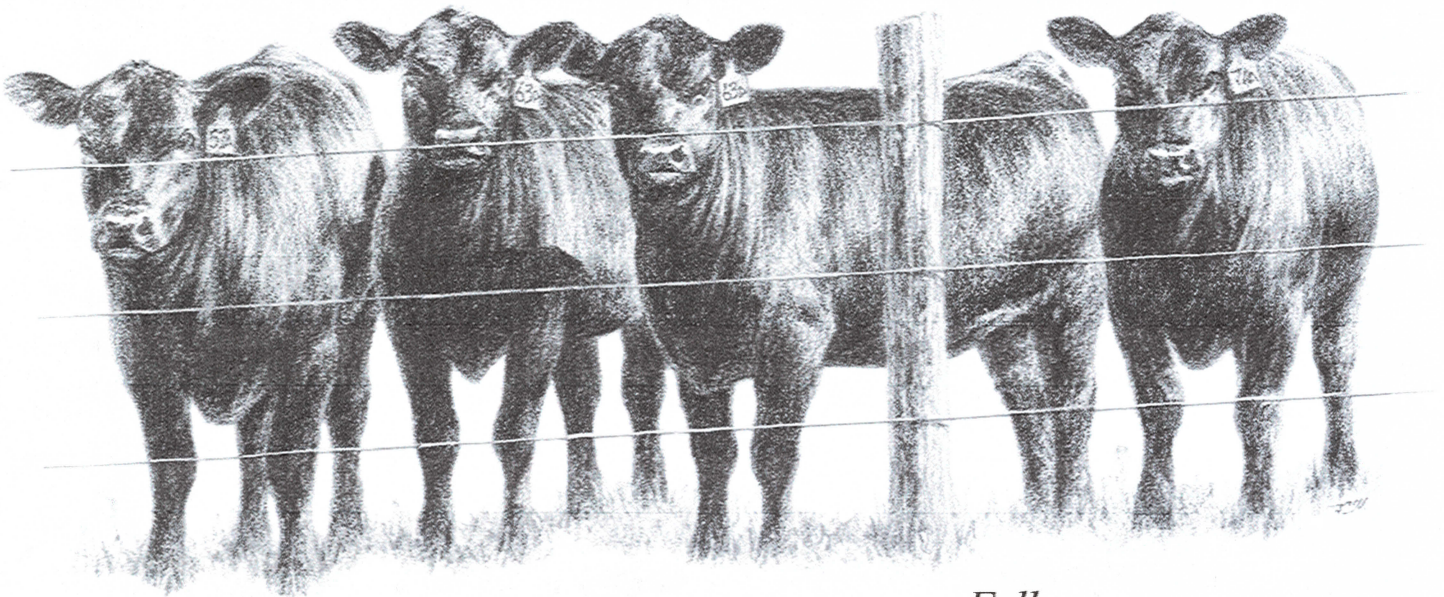
LOT#	SELLER	HEAD	AVG WT	
24-062	Wayne Cantrell	63	800	Steers
24-063	David Denton	75	800	Steers
24-064	Wayside Farms	60	840	Steers
24-065	David Denton	70	900	Steers
24-066	West Farms	120	940	Steers
24-067	Ward Pack	58	940	Steers
24-068	Ray Farms	61	940	Steers
24-069	Ray Farms	65	945	Steers
24-070	Tommy Mize	33	750	Heifers
24-071	West Farms	65	840	Heifers



Have all your animal health needs
delivered directly to your door...

From Antibiotics and Vaccines to Ear Tags and Wormers

If your cattle need it, we can provide it.



Contact Us Today at 888-699-5088
www.performance-feeds.com

Follow us on



BEFORE YOU SEND THEM OFF, MAKE SURE THEY'RE PROTECTED.

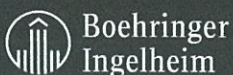
Use Pyramid® 5 + Presponse® SQ, the only vaccine
labeled to protect against BVD 1b.



PREVENTION WORKS.

It's time to go back to school on protecting your calves from respiratory disease. With BVD 1b increasingly prevalent in calves, make PYRAMID 5 + PRESPONSE SQ a part of your preconditioning routine this fall. With the broadest overall protection, PYRAMID 5 + PRESPONSE SQ ensures that your calves are being protected against BVD Type 1, Type 1b and Type 2, along with IBR, BRSV, PI₃ and *M. haemolytica*. So, make sure you have another successful year by contacting your Boehringer Ingelheim Vetmedica, Inc. representative today.

Learn more at bi-vetmedica.com/cattle.



Prevention Works does not imply prevention label claims for use of a vaccine/vaccines.
PYRAMID and PRESPONSE are registered trademarks of Boehringer Ingelheim Vetmedica, Inc.
©2015 Boehringer Ingelheim Vetmedica, Inc. BIVI/PYPR/151047.

PYRAMID® 5
+ PRESPONSE® SQ

Lot 24-062

OWNER: Wayne Cantrell
Smithville TN

BQA #: TN #27441

HEAD: 63 Steers

EST. AVG. WEIGHT: 800

EST. WEIGHT RANGE: 700-900

USDA GRADES: 95% L-1 & M-1 5% L-2 & M-2

FLESH #: 5

DESCRIPTION:
62 Black, 1 Char X

Weaned October 28, 2023. Home Raised by Angus bulls.

PI NEGATIVE

MANAGEMENT:

Cattle are on pasture and hay plus 8-10# per head per day of 14% Co-op Beef feed and Co-op mineral pack with Rumensin.

2 shots each—Inforce 3, Ultrabac 7

1 shot each in neck— Bovishield Gold One Shot,
Bovishield Gold 5



Dewormed with Longrange. No implants. Castrated with bands.

CONDITIONS:

Cattle will be penned by 8:00 AM morning of weigh up in a dry lot. Buyers truck get tare wt by 8:00 AM and travel 35 miles to farm, load and haul to Love's TS, I-40, Exit 280 and weigh on truck with a 2% shrink.

TAKE 48,000-50,000# LOAD OFF HEAVY END

Available April 8th—15th

UPI REPRESENTATIVE: Jonathan Trew

SLIDE: Up Only: 7 Cents



PRICE/CWT: _____

BUYER: _____

Lot 24-063

OWNER: David Denton
Belvidere TN

BQA #:

HEAD: 75 Steers

EST. AVG. WEIGHT: 800

EST. WEIGHT RANGE: 750-850

USDA GRADES: 95% L-1 & M-1 5% L-2 & M-2

FLESH #: 5

DESCRIPTION:
71 Black & BB, 2 Red, 2 Char X

Cattle put together 90+ days.

1 steer with warts.

MANAGEMENT:

Cattle are on 27# per head per day of a TMR including distillers grains, cottonseed, corn, and corn silage plus Gro-Tec mineral with Rumensin.

2 shots each in neck—Calvary 9, Pyramid 5 + Prespense

Dewormed with Noromectin Injectable. No implants.

CONDITIONS:

Cattle will be penned by 7:00 AM morning of weigh up in a dry lot. Hauled 25 miles to UPI Fayetteville Livestock Center by 8:00 AM and weighed on the ground with a 2% shrink.

TAKE 48,000-50,000# LOAD OFF HEAVY END

Available April 8th—15th

Cannot weigh on Tuesdays

CAN SHIP SAME DAY AS LOT 24-065

UPI REPRESENTATIVE: Josh Woodward

SLIDE: Up Only: 7 Cents



PRICE/CWT: _____

BUYER: _____

Lot 24-064

OWNER: Wayside Farms
Shelbyville TN



BQA #:
HEAD: 60 Steers
EST. AVG. WEIGHT: 840
EST. WEIGHT RANGE: 800-900
USDA GRADES: 90% L-1 & M-1 10% L-2 & M-2
FLESH #: 5

DESCRIPTION:

47 Black & BB, 8 Red & RB, 5 Char X

Cattle put together October 2023.

MANAGEMENT:

Cattle are on pasture/hay and silage plus 5# per head per day of #94176PE 14% Co-op Beef pellet and free choice #678 Co-op Supreme mineral.

Fall of 2023:

2 shots each in neck—Covexin 8

1 shot each in neck—Express 5-HS, Pyramid 5 + Presponse SQ, I-Site XP

Dewormed with Eprinex Pour-On. Implanted with Ralgro.

Booster Shots—3/20/24

Pyramid 5 + Presponse SQ, Bar-Vac 7/Somnus, and dewormed with Noromectin Injectable.

CONDITIONS:

Cattle will be penned at 7:00 AM morning of weigh up in a dry lot. Hauled 15 miles to Gilmore Livestock by 9:00 AM and weighed with a 1% shrink.

TAKE 48,000-50,000# LOAD OFF HEAVY END

Available April 9th—12th

UPI REPRESENTATIVE: Richard Brown

SLIDE: Up Only: 7 Cents



PRICE/CWT: _____

BUYER: _____

Lot 24-065

OWNER: David Denton
Belvidere TN

BQA #:
HEAD: 70 Steers
EST. AVG. WEIGHT: 900
EST. WEIGHT RANGE: 850-950
USDA GRADES: 95% L-1 & M-1 5% L-2 & M-2
FLESH #: 5

DESCRIPTION:

65 Black & BB, 3 Red, 2 Char X

Cattle put together 90+ days.

MANAGEMENT:

Cattle are on 27# per head per day of a TMR including distillers grains, cottonseed, corn, and corn silage plus Gro-Tec mineral with Rumensin.

2 shots each in neck—Calvary 9, Pyramid 5 + Presponse

Dewormed with Noromectin Injectable. No implants.

CONDITIONS:

Cattle will be penned by 7:00 AM morning of weigh up in a dry lot. Hauled 25 miles to UPI Fayetteville Livestock Center by 8:00 AM and weighed on the ground with a 2% shrink.

TAKE 48,000-50,000# LOAD OFF HEAVY END

Available April 8th—15th

Cannot weigh on Tuesdays

CAN SHIP SAME DAY AS LOT 24-063

UPI REPRESENTATIVE: Josh Woodward

SLIDE: Up Only: 6 Cents



PRICE/CWT: _____

BUYER: _____

Lot 24-066

OWNER: West Farms
Columbia TN

BQA #: TN #280

HEAD: 120 Steers

EST. AVG. WEIGHT: 940

EST. WEIGHT RANGE: 875-1000

USDA GRADES: 95% L-1 & M-1 5% L-2 & M-2

FLESH #: 5

DESCRIPTION:

90% Black & BB, 10% Red, RB, & Char X

MANAGEMENT:

Cattle are on pasture and hay plus 12# per head per day of Commodity blend feed with mineral.

1 shot each— Nasalgen 3 PMH, Boostered with Bovishield Gold 5, 7 Way Blackleg

Dewormed with Longrange. Implanted with Ralgro.

CONDITIONS:

Cattle will be penned by 8:00 AM morning of weigh up in a dry lot. Buyers trucks get tare wt by 8:00 AM and travel 20 miles to farm, load and haul to Pilot TS, Exit 172, off I-40 and weigh on truck with a 2% shrink.

TAKE 2/48,000-50,000# LOAD OFF HEAVY END

Available April 8th–15th

CANNOT WEIGH SAME DAY AS LOT 24-071

UPI REPRESENTATIVE: Frank Poling

SLIDE: Up Only: 6 Cents



PRICE/CWT: _____

BUYER: _____

Lot 24-067

OWNER: Ward Pack
Woodbury TN

BQA #:

HEAD: 58 Steers

EST. AVG. WEIGHT: 940

EST. WEIGHT RANGE: 875-975

USDA GRADES: 90% L-1 & M-1 10% L-2 & M-2

FLESH #: 5

DESCRIPTION:

49 Black & BB, 2 RB, 7 Char X

Cattle put together as 6 wts.

1 steer with 2" scurs.

MANAGEMENT:

Cattle are on pasture plus 10# per head per day of Commodity mix feed with mineral.

1 shot each in neck—Bovishield Gold 5, Covexin 8

Dewormed with Cydectin. Castrated. Implanted with Component TE-G.

CONDITIONS:

Cattle will be penned by 7:00 AM morning of weigh up in a dry lot. Buyers truck get tare wt by 7:00 AM and travel 35 miles to farm, load and haul to Love's TS, I-24, Exit 89 and weigh on truck with a 2% shrink.

TAKE 48,000-50,000# LOAD OFF HEAVY END

Available April 8th–12th

UPI REPRESENTATIVE: Frank Poling

SLIDE: Up Only: 6 Cents



PRICE/CWT: _____

BUYER: _____

Lot 24-068

OWNER: Ray Farms
Tullahoma TN

BQA #: TN #1715

HEAD: 61 Steers

EST. AVG. WEIGHT: 940

EST. WEIGHT RANGE: 850-975

USDA GRADES: 90% L-1 & M-1 10% L-2 & M-2

FLESH #: 5 few 6

DESCRIPTION:
53 Black & BB, 1 Charolais, 7 Char X

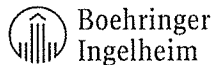
PI NEGATIVE

1 steer with rat tail.

MANAGEMENT:

Cattle are on pasture and hay plus wet stillage and 3# per head per day of Co-op pellets stillage booster with ProSolution mineral with Rumensin.

1 shot each in neck—Pyramid 5+Presponse, Pyramid 5, Bar-Vac 7



Dewormed and deloused with Eprinex. Implanted with Component TE-G. Castrated with knife.

CONDITIONS:

Cattle will be penned by 7:00 AM morning of weigh up in a dry lot. Buyers truck get tare wt by 7:00 AM and travel 30 miles to farm, load and haul to Jack Daniels Distillery and weigh on truck with a 2% shrink. Cattle can be weighed at Exit 114, Truck Plaza in Manchester with no split weighing.

TAKE 48,000-50,000# LOAD OFF HEAVY END

Truck must weigh on a 70' scale - NO SPLIT WEIGHING

Available April 8th—15th

UPI REPRESENTATIVE: Frank Poling

SLIDE: Up Only: 6 Cents



PRICE/CWT: _____

BUYER: _____

Lot 24-069

OWNER: Ray Farms
Tullahoma TN

BQA #: TN #1715

HEAD: 65 Steers

EST. AVG. WEIGHT: 945

EST. WEIGHT RANGE: 875-975

USDA GRADES: 95% L-1 & M-1 5% L-2 & M-2

FLESH #: 5 few 6

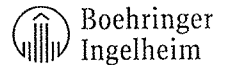
DESCRIPTION:
100% Black & BB

PI NEGATIVE

MANAGEMENT:

Cattle are on pasture and hay plus wet stillage and 3# per head per day of Co-op pellets stillage booster with ProSolution mineral with Rumensin.

1 shot each in neck—Pyramid 5+Presponse, Pyramid 5, Bar-Vac 7



Dewormed and deloused with Eprinex. Implanted with Component TE-G. Castrated with knife.

CONDITIONS:

Cattle will be penned by 7:00 AM morning of weigh up in a dry lot. Buyers truck get tare wt by 7:00 AM and travel 30 miles to farm, load and haul to Jack Daniels Distillery and weigh on truck with a 2% shrink. Cattle can be weighed at Exit 114, Truck Plaza in Manchester with no split weighing.

TAKE 48,000-50,000# LOAD OFF HEAVY END

Truck must weigh on a 70' scale - NO SPLIT WEIGHING

Available April 8th—15th

UPI REPRESENTATIVE: Frank Poling

SLIDE: Up Only: 6 Cents



PRICE/CWT: _____

BUYER: _____

Follow us



Performance Feeds




Serving the Southeastern United States

Specializing In:

- Complete Feeds
- Premixes
- Supplements
- Minerals
- Low Moisture Tubs
- Commodities
- Animal Health Supplies

We Deliver High Quality Livestock Feeds
at the **Lowest Possible Cost to the Producer.**



Contact Us Today at 866-699-5080
Or Visit Us on the Web at www.performance-feeds.com

INFORCE™ 3

**ONE SHOT®
BVD**

Complete respiratory protection

INFORCE™ 3 & ONE SHOT® BVD give you a lot of &s when it comes to calf immunization.

It begins with intranasal INFORCE 3 & the rapid innate & active immunity it provides where IBR, BRSV & PI₃ respiratory diseases start & continues with immune system priming against future exposure. Plus, when you administer ONE SHOT BVD subcutaneously, your calves receive superior Type 1 BVD & Type 2 BVD & *Mannheimia haemolytica* protection.

Because when you start with a balanced immunization program, you help calves stay healthy & grow to their potential & prevent the spread of diseases & earn a better price at market & ... well, you get the picture.

Learn more by contacting your local Zoetis representative or visiting CompleteCalfProtection.com.

All trademarks are the property of Zoetis Inc., its affiliates and/or its licensors.
© 2016 Zoetis Inc. All rights reserved. INF-00025

zoetis

Lot 24-070

OWNER: Tommy Mize
Pulaski TN

BQA #: TN #90

HEAD: 33 Heifers

EST. AVG. WEIGHT: 750

EST. WEIGHT RANGE: 625-825

USDA GRADES: 95% L-1 & M-1 5% L-2 & M-2

FLESH #: 5

DESCRIPTION:
100% Black & BB

Weaned Fall of 2023. Home Raised by Sim-Angus bulls.

1-2 heifers with Pinkeye scars.

MANAGEMENT:
Cattle are on pasture and hay plus 9# per head per day of 16% Performance Feed with mineral.

11/20/2023—

Triangle 5, Presponse, Bar-Vac 7, and dewormed with Dectomax

1/12/2024—

Express 5, Bar-Vac 7

2/23/2024—

Express 5, Bar-Vac 7, Lutalyse

CONDITIONS:
Cattle will be penned by 7:00 AM morning of weigh up in a dry lot. Hauled 35 miles to UPI Columbia Livestock Center by 9:00 AM and weighed on the ground straight. **CAN BE PREG CHECKED, AFTER WGH UP, PRIOR TO SHIPMENT AT BUYERS EXPENSE—3 DAY NOTICE REQUIRED.**

TAKE ALL

Available April 8th—15th

UPI REPRESENTATIVE: Frank Poling

SLIDE: Up Only: 8 Cents



PRICE/CWT: _____

BUYER: _____

Lot 24-071

OWNER: West Farms
Columbia TN

BQA #: TN #280

HEAD: 65 Heifers

EST. AVG. WEIGHT: 840

EST. WEIGHT RANGE: 800-925

USDA GRADES: 95% L-1 & M-1 5% L-2 & M-2

FLESH #: 5

DESCRIPTION:
90% Black & BB, 10% Red, RB, & Char X

MANAGEMENT:
Cattle are on pasture and hay plus 12# per head per day of Commodity blend feed with mineral.

1 shot each— Nasalgen 3 PMH, Boostered with Bovishield Gold 5, 7 Way Blackleg

Dewormed with Longrange. Implanted with Ralgro.

CONDITIONS:
Cattle will be penned by 7:00 AM morning of weigh up in a dry lot. Hauled 6 miles to UPI Columbia Livestock Center by 9:00 AM and weigh on ground with a 2% shrink. **CAN BE PREG CHECKED, AFTER WGH UP, PRIOR TO SHIPMENT AT BUYERS EXPENSE—3 DAY NOTICE REQUIRED.**

TAKE 48,000-50,000# LOAD OFF HEAVY END

Available April 9th, 11th—15th

Cannot weigh on Wednesdays

CANNOT LOAD SAME DAY AS LOT 24-066

UPI REPRESENTATIVE: Frank Poling

SLIDE: Up Only: 7 Cents



PRICE/CWT: _____

BUYER: _____

PROVEN.

YOUR EXPANDED FAMILY OF CATTLE MINERALS.

FEEDS • KNOW-HOW • CARE

CO-OP

PURINA



protritionfeed.com

PROTRITION®

PROVEN ANIMAL NUTRITION & CARE SOLUTIONS



Cattle First.



5% Sterile Solution Extended-Release Injectable
For Subcutaneous Use
Parasiticide for Cattle on Pasture

For the Treatment and Control of Internal and External Parasites of Cattle on Pasture with Persistent Effectiveness

Not for use in female dairy cattle 20 months of age or older, including dry dairy cows. Not for use in calves to be processed for veal.

Not for use in breeding bulls, or in calves less than 3 months of age.

Not for use in cattle managed in feedlots or under intensive rotational grazing.

Caution: Federal law restricts this drug to use by or on the order of a licensed veterinarian.

INDICATIONS FOR USE

LONGRANGE, when administered at the recommended dose volume of 1 mL per 110 lb (50 kg) body weight, is effective in the treatment and control of the following internal and external parasites of cattle:

Gastrointestinal Roundworms	Lungworms
<i>Bunostomum phlebotomum</i> – Adults and L ₄	
<i>Cooperia oncophora</i> – Adults and L ₄	<i>Dictyoaculus viviparus</i> – Adults
<i>Cooperia punctata</i> – Adults and L ₄	
<i>Cooperia surnabada</i> – Adults and L ₄	Grubs
<i>Haemonchus placei</i> – Adults	
<i>Oesophagostomum radiatum</i> – Adults	<i>Hypoderma bovis</i>
<i>Ostertagia lyrata</i> – Adults	
<i>Ostertagia ostertagi</i> – Adults, L ₄ and inhibited L ₄	Mites
<i>Trichostrongylus axei</i> – Adults and L ₄	
<i>Trichostrongylus colubriformis</i> – Adults	<i>Sarcoptes scabiei</i> var. <i>bovis</i>

DOSAGE AND ADMINISTRATION

LONGRANGE® (eprinomectin) should be given only by subcutaneous injection in front of the shoulder at the recommended dosage level of 1 mg eprinomectin per kg body weight (1 mL per 110 lb body weight). Each mL of LONGRANGE contains 50 mg of eprinomectin, sufficient to treat 110 lb (50 kg) body weight. Divide doses greater than 10 mL between two injection sites to reduce occasional discomfort or site reaction.

Body Weight (lb)	Dose Volume (mL)
110	1
220	2
330	3
440	4
550	5
660	6
770	7
880	8
990	9
1100	10

Do not underdose. Ensure each animal receives a complete dose based on a current body weight. Underdosing may result in ineffective treatment, and encourage the development of parasite resistance.



WARNINGS AND PRECAUTIONS

Withdrawal Periods and Residue Warnings

Animals intended for human consumption must not be slaughtered within 48 days of the last treatment. This drug product is not approved for use in female dairy cattle 20 months of age or older, including dry dairy cows. Use in these cattle may cause drug residues in milk and/or in calves born to these cows. A withdrawal period has not been established for pre-ruminating calves. Do not use in calves to be processed for veal.

User Safety Warnings

Not for Use in Humans. Keep this and all drugs out of the reach of children. Reproductive and developmental toxicities have been reported in laboratory animals following high, repeated exposures to N-methyl-2-pyrrolidone (NMP). Pregnant women should wear gloves and exercise caution or avoid handling this product. The Safety Data Sheet (SDS) contains more detailed occupational safety information.

To report adverse effects, to obtain an SDS, or for assistance, contact Boehringer Ingelheim Animal Health USA Inc. at 1-888-637-4251. For additional information about adverse drug experience reporting for animal drugs, contact FDA at 1-888-FDA-VETS or www.fda.gov/reportanimalae.

Animal Safety Warnings and Precautions

The product is likely to cause tissue damage at the site of injection, including possible granulomas and necrosis. These reactions have disappeared without treatment. Local tissue reaction may result in trim loss of edible tissue at slaughter.

Observe cattle for injection site reactions. If injection site reactions are suspected, consult your veterinarian. This product is not for intravenous or intramuscular use. Protect product from light. LONGRANGE® (eprinomectin) has been developed specifically for use in cattle only. This product should not be used in other animal species.

When to Treat Cattle with Grubs

LONGRANGE effectively controls all stages of cattle grubs. However, proper timing of treatment is important. Consult your veterinarian concerning the proper time for treatment.

Environmental Hazards

Not for use in cattle managed in feedlots or under intensive rotational grazing because the environmental impact has not been evaluated for these scenarios.

Other Warnings: Parasite resistance may develop to any dewormer, and has been reported for most classes of dewormers.

Fecal examinations or other diagnostic tests and parasite management history should be used to determine if the product is appropriate for the herd/flock, prior to the use of any dewormer. Following the use of any dewormer, effectiveness of treatment should be monitored (for example, with the use of a fecal egg count reduction test or another appropriate method).

A decrease in a drug's effectiveness over time as calculated by fecal egg count reduction tests may indicate the development of resistance to the dewormer administered. Your parasite management plan should be adjusted accordingly based on regular monitoring.

Macrocyclic lactones provide prolonged drug exposure that may increase selection pressure for resistant parasites. This effect may be more pronounced in extended-release formulations.

TARGET ANIMAL SAFETY

Not for use in bulls, as reproductive safety testing has not been conducted in males intended for breeding or actively breeding. Not for use in calves less than 3 months of age because safety testing has not been conducted in calves less than 3 months of age.

STORAGE

Store at 77° F (25° C) with excursions between 59° and 86° F (15° and 30° C). Protect from light. This information is not comprehensive. Consult your veterinarian for more information. Visit <https://bi-animalhealth.com/cattle/products/longrange> for the FDA approved product label.

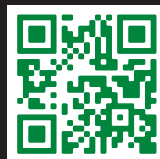
Approved by FDA under NADA # 141-327
Marketed by: Boehringer Ingelheim Animal Health USA Inc., Duluth, GA 30096
The Cattle Head Logo® and LONGRANGE® are registered trademarks of Boehringer Ingelheim Animal Health USA Inc.
© 2022 Boehringer Ingelheim Animal Health USA Inc. All rights reserved.
1050-2889-99, Rev. 07/2022, 8LDN016F US-80V-0173-2023A-V2



INVESTING IN LONGRANGE® [EPRINOMECTIN]
DOESN'T JUST TIP THE SCALES IN YOUR FAVOR.
**IT DARN NEAR
BREAKS THEM.**

Getting more from your dewormer starts with a proven investment. LONGRANGE is the first and only dewormer that provides up to 150 days of parasite control.¹ It's how top producers help their herds pack on the pounds, and in turn, bank more bucks. LONGRANGE is the difference between being average and being at the top of your game. So, next time you're deworming cattle, don't just get the job done. **Get it outdoors.**

**PROVEN TO PAY OFF IN
POUNDS AND DOLLARS.
CALCULATE THE RETURN
FOR YOUR HERD.**



longrangecalculator.com

OUTLAST. OUTPERFORM. OUTDO.

LONGRANGE IMPORTANT SAFETY INFORMATION: Do not treat within 48 days of slaughter. Not for use in female dairy cattle 20 months of age or older, including dry dairy cows, or in veal calves. Post-injection site damage (e.g., granulomas, necrosis) can occur. These reactions have disappeared without treatment. Not for use in breeding bulls, or in calves less than 3 months of age. Not for use in cattle managed in feedlots or under intensive rotational grazing. Pregnant women should wear gloves and exercise caution or avoid handling this product.

¹ Dependent upon parasite species, as referenced in FOI summary and LONGRANGE product label.